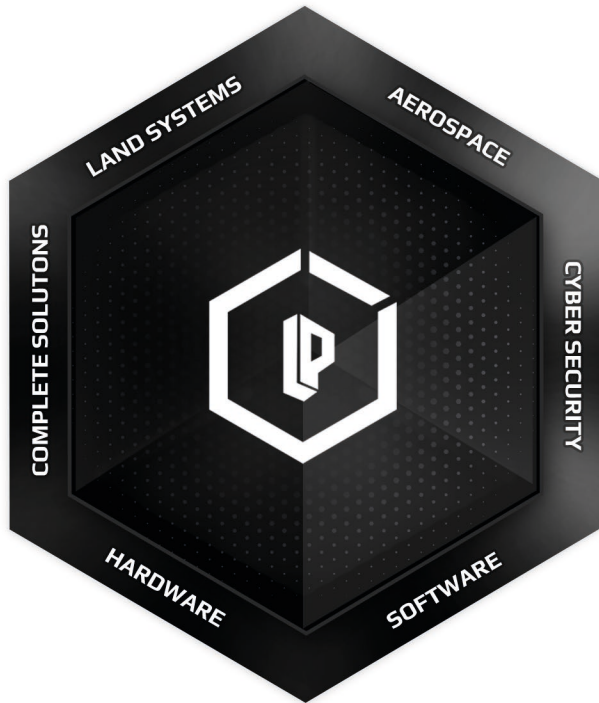




LPP s.r.o.
COMPANY PROFILE





C6 ISR SYSTEM LPP AX IS COMBINING ALL TYPES OF COMMAND AND CONTROL LEVELS CONNECTING THEM INTO THE COMPLEX UNIT WITH THE INTEGRATION OF ALL THE NECESSARY SUB-SYSTEMS INTO VARIOUS AERIAL AND LAND PLATFORMS.

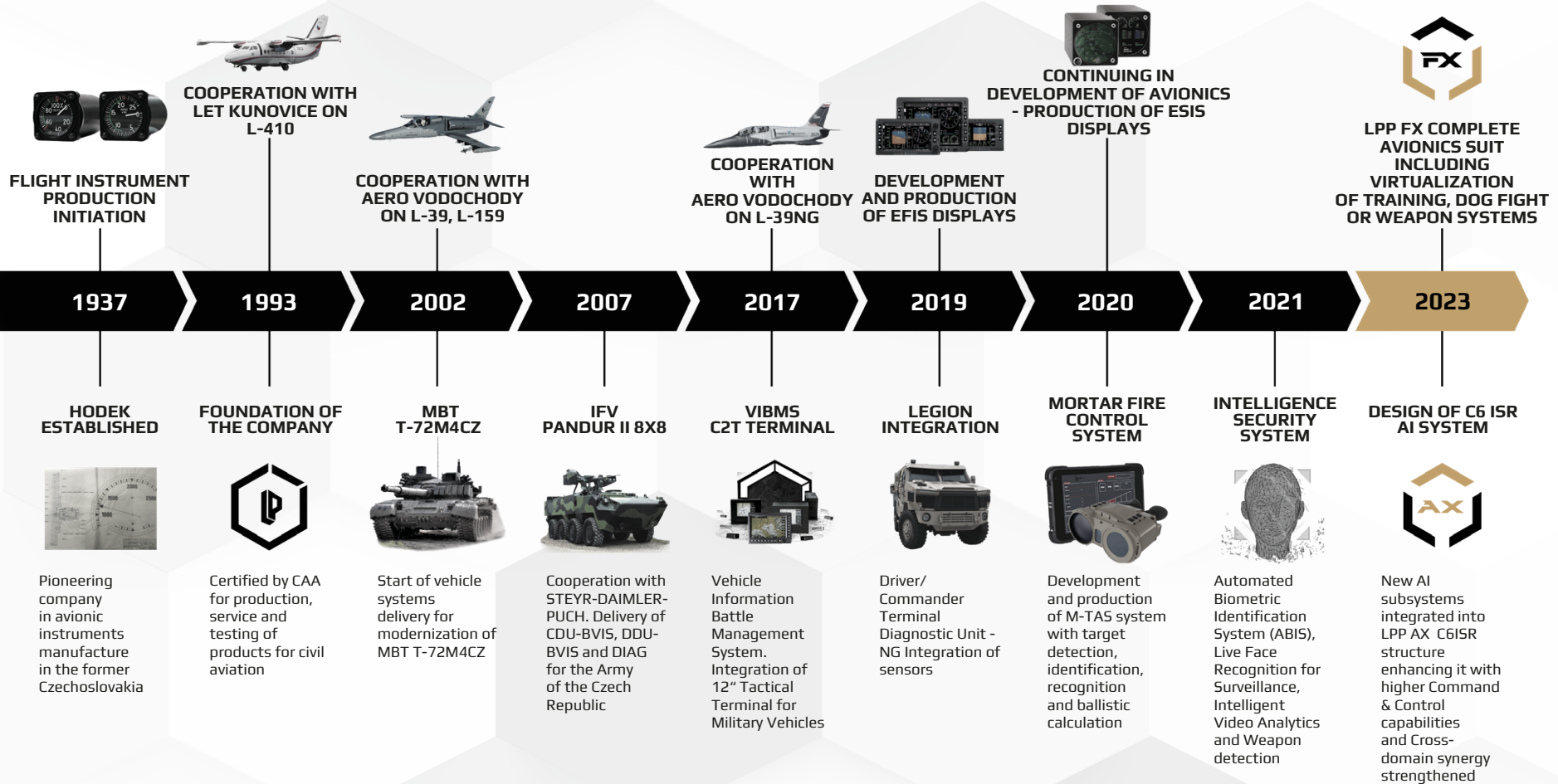


LPP FX SYSTEMS PROVIDE COMPREHENSIVE AVIONIC SOLUTIONS FOR INCLUDING OEM PRODUCTION AND R&D CHANGES, INTEGRATION AND INSTALLATION, MODERNIZATION PACKAGES, TRAINING AND SUPPORT.



COGNITIONIX REPRESENTS AN INTEGRABLE INTELLIGENT SECURITY SYSTEM FOR CYBER SURVEILLANCE AND RECONNAISSANCE THROUGH LIVE VIDEO ANALYSIS AND FACE AND OBJECT RECOGNITION.

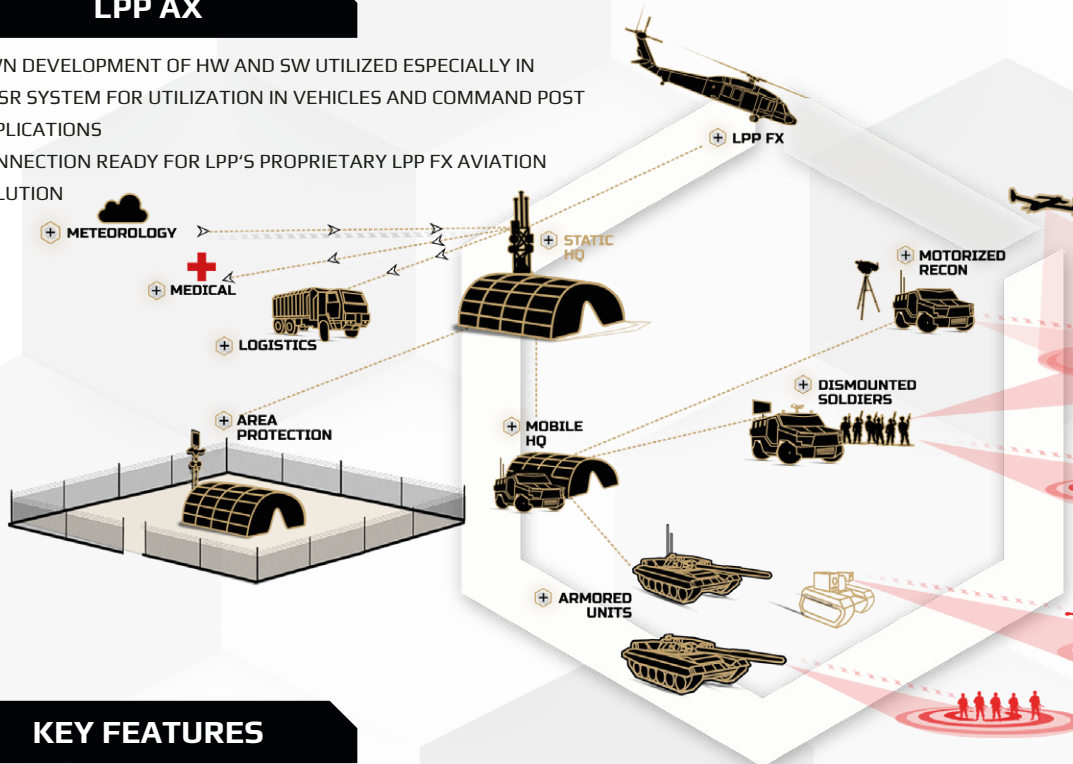
LPP TIMELINE



LPP AX SOLUTION

LPP AX

- › OWN DEVELOPMENT OF HW AND SW UTILIZED ESPECIALLY IN C6ISR SYSTEM FOR UTILIZATION IN VEHICLES AND COMMAND POST APPLICATIONS
- › CONNECTION READY FOR LPP'S PROPRIETARY LPP FX AVIATION SOLUTION



HEADQUARTERS

- › PLANNING AND MANAGEMENT EXECUTED THROUGH LPP AX SW & HW

VEHICLE

- › MULTIPLE PLATFORMS WITH LPP INTEGRATED COMPONENTS SUCH AS SENSORS, CDUS, RADIOS OR WEAPONS

DISMOUNTED SOLDIER

- › SIMPLE AND RAPID COMMUNICATION THROUGH LPP DEVELOPED SYSTEMS

KEY FEATURES

- › THREE-LEVEL MODULAR SYSTEM (HQ5 TO D5)
- › ACHIEVING CROSS-DOMAIN SYNERGY
- › SOLDIER-FRIENDLY SYSTEM, INTUITIVE USE AND MAINTENANCE
- › PROPRIETARY LPP HW & SW MODULAR SOLUTION
- › THE SYSTEM IS FULLY CONFIGURABLE AND SCALABLE ACCORDING TO CUSTOMER REQUIREMENTS
- › COMPLETE LIFE CYCLE SUPPORT FOR CUSTOMERS PROVIDED ALL AROUND THE WORLD

VEHICLE INTEGRATION

RADARS & CAMERAS

- › DAY, NIGHT AND THERMOVISION MODULES
- › GROUND SURVEILLANCE RADAR MODULES
- › SURVEILLANCE & FIRE CONTROL APPLICATIONS

PLATFORMS

- › HEAVY-DUTY OFF-ROAD PLATFORMS
- › 4X4, 6X6, 8X8 & TRACKED PLATFORMS
- › LARGE PAYLOAD CAPACITY



PROTECTION SYSTEM

- › CBRN & CWA COUNTERMEASURES
- › ERA & SLAT ARMOR PACKAGES
- › E-WAR JAMMERS & COUNTERMEASURES
- › SELF-PROTECTION SMOKE SYSTEMS

WEAPON SYSTEMS

- › RCWS & MANUAL TURRETS
- › UP TO 14,5MM MACHINE GUNS
- › GRENADE LAUNCHERS & AT MISSILES

DIAGNOSTICS & VETRONICS

- › INTEGRATED LOGISTICS SUPPORT
- › PREDICTIVE MAINTENANCE
- › COMPLETE DIAGNOSTICS & EVALUATION OF VEHICLE

COMMUNICATION

- › VHF/UHF AND HF RADIO STATIONS
- › INTEGRATION INTO C6 ISR STRUCTURE
- › G-TRACK FOR BLUE-FORCE-TRACKING (BFT)
- › MILITARY STANDARDS (MANET, MIL-STD, STANAG, ...)

LPP AX
VEHICLE C6ISR



EO/IR SENSORS



COMMUNICATION



PROTECTION



MISCELLANEOUS



GSR



DISMOUNTED SOLDIER



NV & THERMAL CAMERAS

- › HELMET MOUNTED, HANDHELD AND STAND-ALONE DEVICES
- › THERMAL VISION LONG-RANGE DEVICES WITH GPS AND RANGEFINDERS
- › SOLDIER NIGHT VISION & THERMAL VISION

COMMUNICATION

- › HANDHELD & MAN-PACK UNITS
- › BUILT-IN GNSS RECEIVER
- › INTEGRATION INTO C6 ISR STRUCTURE
- › G-TRACK FOR BLUE-FORCE-TRACKING (BFT)
- › MILITARY STANDARDS (MANET, MIL-STD, STANAG, ...)

TRAINING

- › INDIVIDUAL SKILLS AND TEAM COOPERATION TRAINING
- › SCENARIOS DEVELOPED BY EXPERIENCED EX-MILITARY PERSONNEL
- › CQB TACTICS, EOD/IEDD, CONVOY, AMBUSH SITUATIONS



PROTECTION

- › BALLISTIC SHIRTS, VESTS, PLATE CARRIERS AND HELMETS
- › RIOT PROTECTION EQUIPMENT
- › ACCESSORIES FOR VESTS AND PLATE CARRIERS
- › NIJ 0101.04 & 0101.06 COMPLIANT

WEAPONS

- › ASSAULT RIFLES, SNIPERS, PISTOLS
- › LMGS, HMGS, AT WEAPONS
- › HIGH-GRADE AMMUNITION

ACCESSORIES

- › GUNSHOT DETECTION AND LOCALIZATION SYSTEMS
- › INCREASED MAGAZINES, ADDITIONAL RAILS, ETC.
- › FLASHLIGHTS, LASER POINTERS, SCOPES, ETC.
- › BALLISTIC CALCULATORS

SPECIAL EQUIPMENT



BODY ARMOR



COMMUNICATION



PDA/TABLETS



WEAPONS



HW & SW SOLUTIONS

INFORMATION MANAGEMENT

- › DATA INPUT FROM VARIABLE SOURCES SUCH AS DIAG UNITS OR OPTOELECTRONICS
- › PROCESSES THE DATA BY CENTRAL DATA TERMINAL AND DISPLAYS IT ON TACTICAL COMMAND UNIT
- › STREAMLINED DATA FLOW FOR POWERFUL TASK EXECUTION

TCU - TACTICAL COMMAND UNIT

- › OEM DISPLAY TERMINAL FOR VARIOUS LPP SOFTWARES/ SYSTEMS
- › INTEGRATES ALL AVAILABLE DATA TO SUPPORT DECISION-MAKING PROCESS
- › PROVIDES INFORMATION SUCH AS STATUS, ALERT AND NAVIGATION AND DISPLAYS REAL-TIME VIDEO
- › 10" COLOR DISPLAY IN A RUGGEDIZED CASE



SYSTEM SECURITY

- › PROACTIVE NETWORK & BEHAVIORAL MONITORING
- › SOFTWARE SECURITY
 - › HARDENED PROPRIETARY MODIFIED UNIX
 - › INHOUSE DEVELOPMENT OF MODULES
- › HARDWARE SECURITY
 - › DATA DIODES AND FILTER PROTECTION
 - › ENCRYPTION

CDT - CENTRAL DATA TERMINAL

- › NEXT-GENERATION INFORMATION SYSTEM
- › IMPROVED SUPPORT FOR VIDEO PROCESSING
- › NEW APPROACH TO STORE AND PROCESS DATA
- › WEB ACCESS WITH MULTI-LEVEL IDENTITY VERIFICATION
- › SECURE ENCRYPTED ACCESS
- › SQL DATABASE LOGIC

SOFTWARE DEVELOPMENT

- › COMMAND & CONTROL THREE-LEVEL COMMUNICATION SYSTEM
- › REAL-TIME VEHICLE DIAGNOSTICS
- › MORTAR TARGET ACQUISITION SYSTEM
- › FACE & OBJECT DETECTION AND RECOGNITION

UGV SOLUTIONS



COMPLETE SOLUTION FOR UGV

- › COMPLETE MANAGEMENT AND CONTROL SOFTWARE SUITE FOR VARIOUS PLATFORMS
- › BASED ON DEEP NEURAL NETWORKS
- › OEM PRODUCTION
 - › PROPRIETARY SW DEVELOPMENT
 - › INHOUSE HW PRODUCTION



GROUND STATION

- › COMMON SOLUTION FOR UGV AND UAV PLATFORMS
- › COMPACT PORTABLE DESIGN FOR INDEPENDENT OPERATIONS
- › EXTENSIVE CONTAINER GCS WITH MISSION BACKUP AND LOGISTICS
- › READY FOR ADVANCED VIDEO ANALYTICS SOFTWARE

ADVANCED FEATURES

- › DATA FUSION FROM VARIOUS SOURCES
- › AUTONOMOUSLY DRIVE & PATHFINDING THROUGH TERRAIN
- › LIMITING HUMAN DEPENDENCY AND MAN-MADE ERRORS
- › EASY INTEGRATION INTO EXISTING INFRASTRUCTURE
- › LONG DEPLOYMENT THANKS TO THE HYBRID SYSTEM

MISSIONS

- › LOGISTICS AND SUPPORT
- › SURVEILLANCE AND RECONASAINCE
- › COMMUNICATION RELAY
- › SPECIALIZED SURVEY (CBRN, EOD, ...)
- › SEARCH AND RESCUE

DATA MANAGEMENT

- › CUSTOMER-ORIENTED KEY MANAGEMENT
- › USER / AUTHORIZATION BASED PERMISSION
- › ON THE MOVE NETWORK UPDATE
- › DATA AVAILABILITY BASED ON PERMISSIONS

UAV PLATFORMS & SOLUTIONS



TAU SWARM SYSTEM

- › ADVANCED UAV PLATFORM
- › MULTI-MISSION UAV
- › SWARM ABILITY
- › MOBILE LAUNCHING TUBE
- › EASY AND SWIFT DEPLOYMENT
- › EXCHANGEABLE FRONT MASK PAYLOAD



ADVANCED FEATURES

- › INDEPENDENT AUTONOMOUS OPERATION
- › IMPROVED AREA SEARCH & DETECTION
- › EXPENDABLE FAST REACTION UNITS
- › COVERAGE OF DIFFICULT AREAS AND BLIND SPOTS

CUSTOMIZED PLATFORMS

- › BRUS - CAN BE CUSTOMIZED ACCORDING TO MIL STANDARDS
- › HERCULES - EXTREMELY TOUGH
- › REACH - ENDURANCE MORE THAN 20 HOURS
- › SKYSPOTTER 150 - FLIES AND HOVERS AT EXTREMELY LOW ALTITUDES
- › ASTRUM 500 - NON-STOP 360° SURVEILLANCE

ANTI-DRONE SYSTEM

- › MODULAR SCALABLE SYSTEM
- › CONTINUOUS OPERATION FOR 24/7
- › MICRO AND SMALL DRONES PROTECTION
- › 360° PROTECTION RADIUS
- › DETECTION OVER 1,5KM

UNMANNED AERIAL TARGETS

- › LOW-COST DISPOSABLE PLATFORM EFFECTIVE
- › TRAINING
- › VARIABLE PURPOSE

ELECTRO-OPTICAL DEVICES & SOLUTIONS



THERMO VISION

- › UNIVERSAL DEVICES FOR DIFFICULT CONDITIONS AND SITUATIONS
- › LONG-RANGE TARGETING WEAPON SIGHTS
- › BINOCULAR AND MONOCULAR OBSERVATION COMPLEXES
- › COMBINED STATIONARY SYSTEMS WITH COOLED CORES
- › MOBILE DEVICES WITH 12 OR 17 MM UNCOOLED CORES
- › LONG-RANGE OBSERVATION CAPABILITIES
 - › 2.5+KM WITH UNCOOLED CORES
 - › 10+KM WITH COOLED CORES



TAS SYSTEM

- › MODULAR TARGET ACQUISITION SYSTEM (TAS) FOR VARIOUS EFFECTORS
- › DESIGNED TO PRECISELY DETECT, IDENTIFY, AND RECOGNIZE TARGETS
- › INTERCONNECT'S RECONNAISSANCE MODULES WITH C2/C4/C6 ELEMENTS
- › BASED ON PROPRIETARY DEVELOPED SOFTWARE AND LRB-TAS COMPLEX
- › INTERACTIVE MAP OVERLAYS WITH AUTOMATIC CALCULATION OF COORDINATES
- › TURNKEY SOLUTION-IMPLEMENTATION FOR EXISTING EQUIPMENT

NIGHT VISION

- › MODERN MODULAR COMPACT SYSTEMS
- › GENERATION III AND III+ AMPLIFICATION TUBES
- › TOUGH, COMPACT, ERGONOMIC DEVICES WITH IP67 RATING
- › LONG TIME BATTERY OPERATIONS AND HANDS-FREE OPERATION SETS

GROUND SURVEILLANCE RADARS

- › SILENT, INDEPENDENT OBSERVATION FOR LONG-TIME DEPLOYMENT
- › INTUITIVE CONTROL SOFTWARE FOR A SIMPLE LEARNING CURVE
- › EXCELLENT MTBF CHARACTERISTIC AND PRICE / DETECTION VALUE
- › PRECISE DOPPLER MEASURING BASED ON FMCW PRINCIPLE
- › EXTENDED DETECTION AND INSTRUMENTAL RANGES
 - › SOLDIERS (1M2) AT 9+KM
 - › VEHICLES (10M2) AT 15+KM
 - › INSTRUMENTAL RANGE OVER 24KM

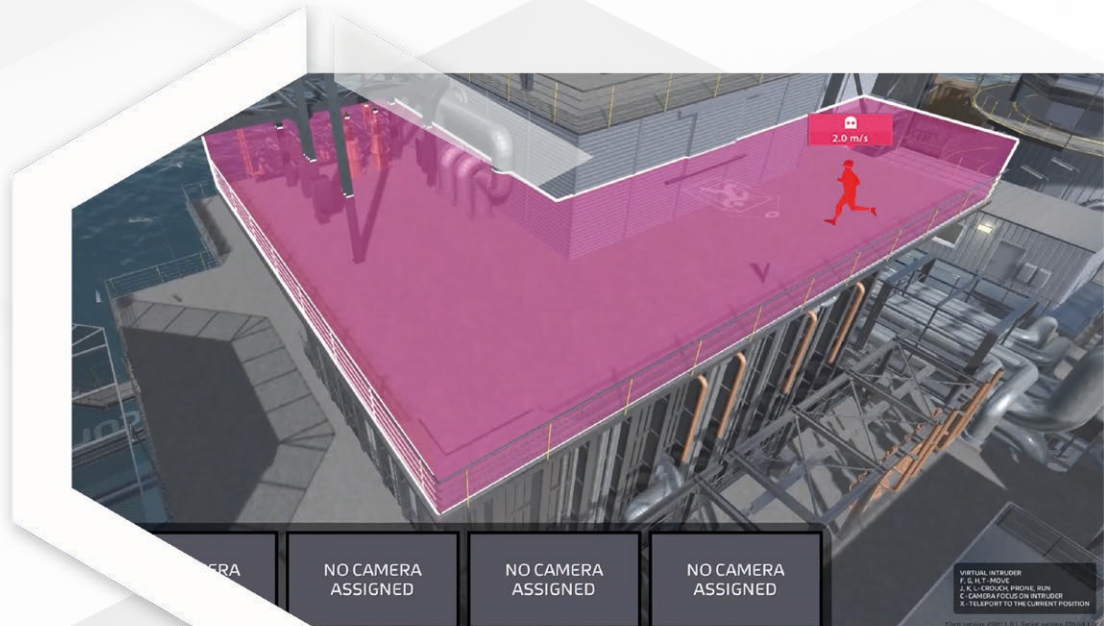
ADVANCED PERIMETER SURVEILLANCE

LiDAR TECHNOLOGY

- › ADVANCED MULTICHANNEL DETECTORS
- › EXTREME ACCURACY OF RANGE ESTIMATION
 - › DOWN TO 3CM
- › WIDE AREA OF COVERAGE
 - › UP TO 300M
- › SPEED OF LIGHT MEASUREMENT SYSTEM
- › EXCELLENT HARSH WEATHER RESISTANCE

3D SPACE ELEMENTS

- › UNIQUE VISUALIZATION OF DETECTORS
- › LIGHT SOURCE EFFECT CALCULATIONS (STREET LAMPS, ETC.)
- › INDIVIDUAL DETECTOR SETTINGS
 - › 3D ZONE TOOL DESIGNER
 - › SENSITIVITY ADJUSTMENTS
- › FALSE ALARM PREVENTION AND IDENTIFICATION



UNIQUE FEATURES

- › VOLUMETRIC DETECTION
- › 3D NAVIGATIONAL MAP
- › PINPOINT LOCALIZATION OF INTRUDER INSIDE GRID
- › INTRUDER'S MOVEMENT, TRAJECTORY AND SPEED
- › CAMERAS AUTOROTATES TO POINT OF INTRUSION
- › 3D ZONES WITH DIFFERENT ALARM PRIORITIES

3D MAPPING

- › TRUE REPRESENTATION OF REALITY
- › UAV PHOTOGRAMMETRY APPROACH
- › SCALE ACCURATE IN 3D ENVIRONMENT
- › ADVANCED VIRTUAL REALITY INTERFACE

VIRTUAL INTRUDER

- › SYSTEM SELF-TEST & FAILURE IDENTIFICATIONS
- › IMPROVED SYSTEM DESIGN & DEPLOYMENT
 - › DETECTOR RANGES & SETTINGS
 - › BLIND SPOTS ADVANCE IDENTIFICATION
 - › INTRUDERS TEST SIMULATIONS

AI VIDEO ANALYTICS AND BIOMETRICS

MOBILE REAL-TIME FACE DETECTION & RECOGNITION

PERSON DETECTION

- › FACE RECOGNITION SYSTEM
- › REAL-TIME IDENTITY VERIFICATION
- › HUMAN TRACKING AND TRACING
- › POI AUTOMATIC IDENTIFICATION



SITUATIONAL AWARENESS

- › PERIMETER PROTECTION
- › INTRUSION DETECTION
- › WEAPON DETECTION
- › PATH MAP & MOVEMENT HEAT MAP

SOURCE INDEPENDENT

- › DRONE VIDEO TRANSMISSION STREAM
- › PORTABLE SURVEILLANCE SYSTEM
- › MILITARY VEHICLE CAMERA
- › SOLDIER MOUNTED CAMERA
- › CCTV CAMERA MERGING



EVENTS & ALARMS

- › ACCURATE REAL-TIME EVENT DETECTIONS AND ALARMS
- › WATCHLIST ALERTING SYSTEM FOR POI IDENTIFICATION
- › HIGHLY CUSTOMIZABLE NOTIFICATION SYSTEM
- › MINIMIZE IMPERFECT HUMAN FACTORS (ALERTNESS OR RESPONSE OPERATORS)

VIDEO FRAME ANNOTATION

- › SCENE LABELING/TAGGING
- › OBJECTS DETECTION AND TRACING
- › VEHICLE AND LICENSE PLATE RECOGNITION
- › PEOPLE CLASS/GENDER – MALE, FEMALE

AI VIDEO ANALYTICS AND BIOMETRICS

ASSESSMENT & THREAT PREVENTION

PERSON IDENTIFICATION

- › MULTIMODAL IDENTIFICATION (FACE, FINGER, IRIS)
- › MOVEMENT IN FORBIDDEN AREA
- › PERSON OF INTEREST REAL-TIME TRACKING
- › MISSING CHILDREN OR ADULT SEARCH
- › SUSPECT PATH AND ACTIVITIES TRACING
- › FREQUENT PRESENCE OF UNKNOWN PERSON

OBJECT ANALYSIS

- › ABANDONED BAGGAGE
- › LICENSE PLATE & VEHICLE IDENTIFICATION
- › PERSON AND OBJECT RELATIONSHIP ANALYSIS
- › CARS/BIKES RESTRICTED IN AREA

GUN DETECTION

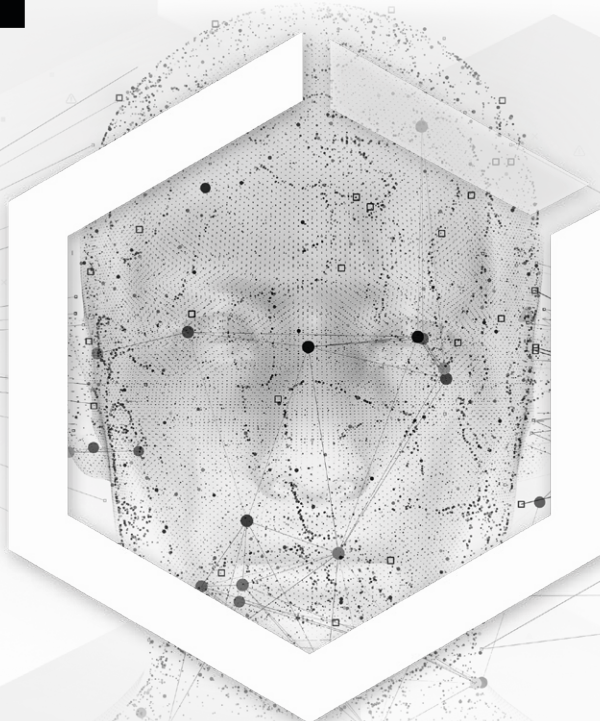
- › WEAPON DETECTION IN MILLISECONDS
- › WEAPON CLASS – SMALL/LONG
- › ARMED PERSON IDENTIFICATION AND LOCALIZATION
- › REAL-TIME TRACKING OF WEAPON USAGE
- › ACCOMPLICE TRACKING

FACE RECOGNITION

- › VERIFICATION 1:1
- › IDENTIFICATION 1:N
- › AUTOMATED WATCHLIST IDENTIFICATION
- › MISSING PERSON IDENTIFICATION AND LOCALIZATION
- › FACE MASK & ANTHROPOLOGIC INDEPENDENT

PERIMETER PROTECTION

- › PERSON/OBJECT IN RESTRICTED AREA
- › WHITELIST OF AUTHORIZED PERSON
- › UNAUTHORIZED ACCESS DETECTION
- › BIOMETRIC TOUCHLESS ACCESS CONTROL



AREA PROTECTION



UAV AND UGV

- › INDEPENDENT AUTONOMOUS OPERATION
- › IMPROVED AREA SEARCH & DETECTION
- › EXPENDABLE FAST REACTION UNITS
- › COVERAGE OF DIFFICULT AREAS AND BLIND SPOTS

COMMUNICATION

- › COMPATIBLE WITH VHF/UHF OR HF RADIOS
- › IP COMMUNICATION STANDARDS
- › WIFI/LTE/SATCOM DATALINKS

ADVANCED SENSORS

- › NETWORKED SEISMIC NODES
- › GUNSHOT DETECTION AND AZIMUTH LOCATION
- › MOBILE VEHICLE REACTION UNITS
- › SEMI-AUTONOMOUS RCWS

SOFTWARE

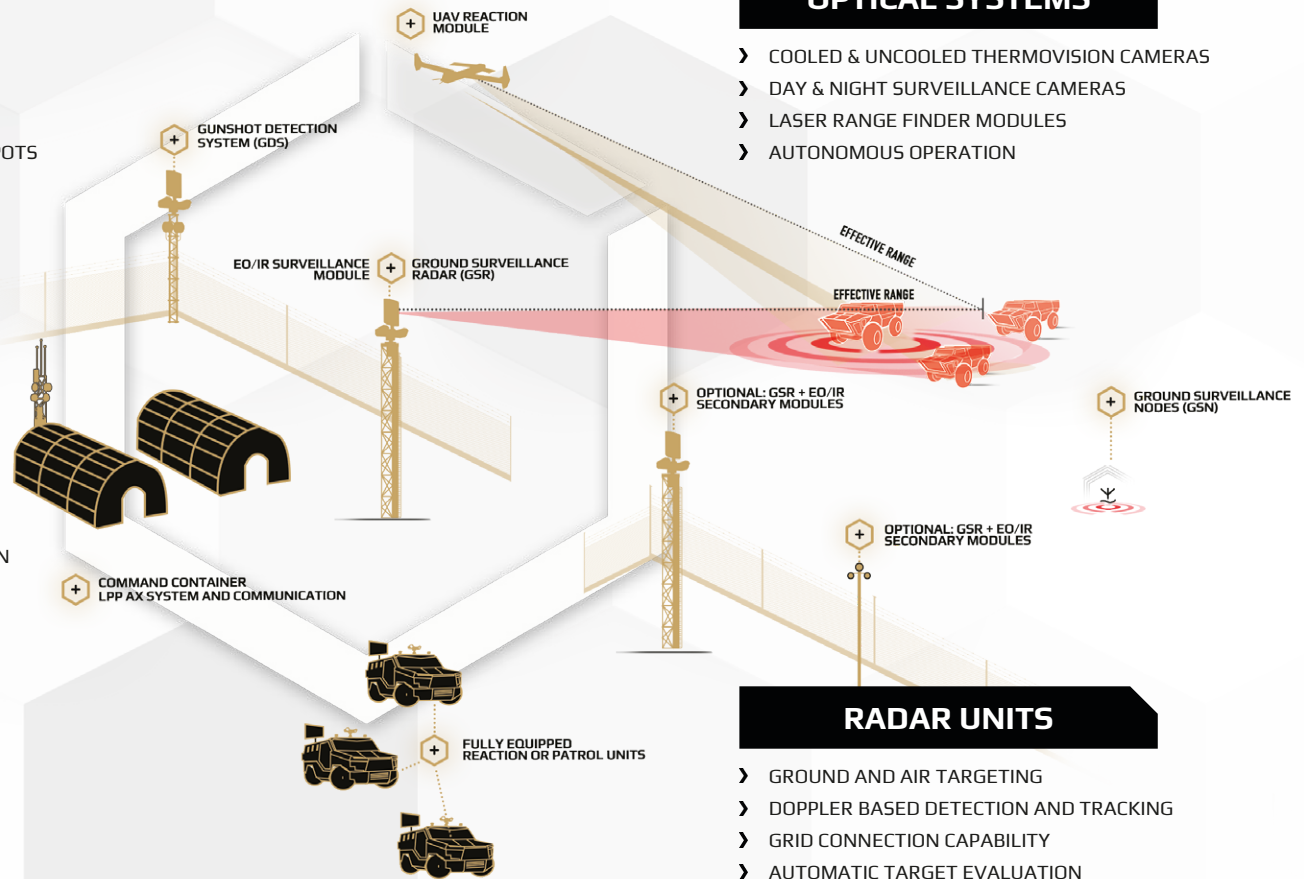
- › INTUITIVE UNIFIED CONTROL INTERFACE
- › MAP & TARGET MANAGEMENT
- › TACTICAL SITUATION VISUALIZATION
- › LOCAL OR REMOTE ACCESS & CONTROL
- › SECURED USER AUTHORISATION
- › SEAMLESS INTEGRATION GUARANTEED BY LPP AX C6ISR SYSTEM

OPTICAL SYSTEMS

- › COOLED & UNCOOLED THERMOVISION CAMERAS
- › DAY & NIGHT SURVEILLANCE CAMERAS
- › LASER RANGE FINDER MODULES
- › AUTONOMOUS OPERATION

RADAR UNITS

- › GROUND AND AIR TARGETING
- › DOPPLER BASED DETECTION AND TRACKING
- › GRID CONNECTION CAPABILITY
- › AUTOMATIC TARGET EVALUATION



LPP FX SOLUTION



LPP FX

- › TURN-KEY SOLUTION FOR COMPLETE OVERHAUL, MODERNIZATION AND MID-LIFE UPGRADE OF THE FLEET
- › COMPLETE SYSTEM INTEGRATION INCLUDING ARMAMENT CONTROL AND RADAR INTEGRATION



COMPLETE SOLUTION

- › CONCEPTUAL DESIGN AND SOLUTION
- › PRODUCTION AND R&D CHANGES IMPLEMENTATION
- › ON-SITE SUPPORT AND MENTORING
- › LOGISTICS AND SPARE PARTS SUPPORT
- › ACQUISITION, MODERNIZATION AND SALES

FEATURES

- › PROPRIETARY HW AND SW SOLUTION
- › CUSTOMIZABLE GUI
- › NVIS COMPATIBLE
- › REDUNDANT SYSTEM ARCHITECTURE
- › NON-ITAR

SPECIAL OPERATIONS

- › SAR AND MEDICAL MODIFICATION INCLUDING EQUIPMENT
- › VIP INTERIOR MODIFICATION PER REQUEST
- › FIRE-FIGHTING EQUIPMENT INTEGRATION
- › POLICE AND SPECIAL OPERATION EQUIPMENT
- › MULTI-PURPOSE INSTALLATIONS

TRAINING / SIMULATOR

- › BASIC/ADVANCED TRAINING PROGRAMS
- › ENGINEERING AND TECHNICAL STAFF TRAINING
- › ANALYSES OF SIMULATED FAILURES AND MALFUNCTIONS
- › VIRTUAL TRAINING FOR MAINTAINERS AND PILOTS
- › TRAINING OF PILOTS FROM ZERO TO HERO
- › FROM DESKTOP UP TO THE FULL MISSION SIMULATORS, WITH THE INTEGRATION OF VR SYSTEMS

AVIONICS EFIS & COCKPIT UPGRADES



OEM AVIONICS

- › GLASS COCKPIT AIRCRAFT UPGRADE - EFIS & ESIS
- › AHRS AND COMMUNICATION SYSTEMS
- › INTERNAL FLIGHT DATA RECORDERS
- › STORAGE MANAGEMENT SYSTEM
- › ENGINE MONITORING SYSTEMS - HUMS
- › ANALOG INSTRUMENTS

GLASS COCKPIT

- › EFIS OEM - 5"/7"/10" RECTANGULAR
- › ESIS OEM - 3" ROUND
- › HEALTH & USAGE MONITORING SYSTEM (HUMS)
- › FLIGHT MANAGEMENT SYSTEM
- › NVG COMPATIBLE



ANALOG FLIGHT INSTRUMENTS

- › RPM SENSORS AND INDICATORS
- › INCLINOMETERS, MAGNETIC COMPASSES
- › HYDRAULIC VALVES, LINEAR RODS AND MORE
- › UNDER CERTIFICATION OF THE NECESSARY PERMITS AND APPROVALS

SPECIAL EQUIPMENT

- › ELECTRO-OPTICAL INSTALLATION
- › EW PROTECTION SUITS
- › NVG, MWR SYSTEMS
- › FIRE-FIGHTING EQUIPMENT INTEGRATION
- › WEATHER RADAR, HOOKS AND FAST-ROPIING SYSTEMS, DATALINK AND MORE

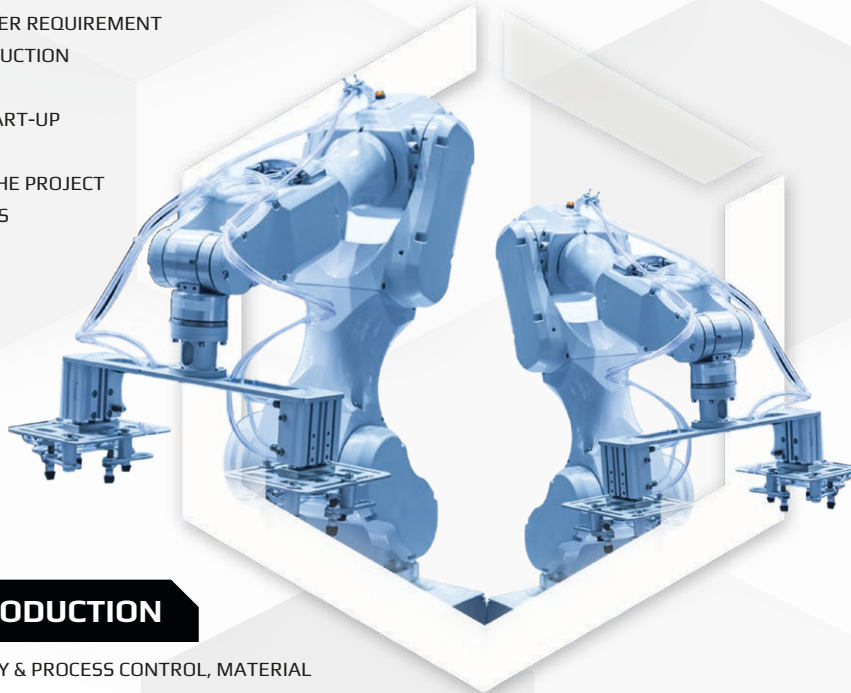
INTERIOR MODIFICATION

- › AIR-CONDITIONING SYSTEMS
- › SAFETY SEATS
- › MADEVAC, CASEVAC INSTALLATIONS
- › SAR AND MEDICAL MODIFICATION

INDUSTRY SOLUTIONS

PROJECT MANAGEMENT

- › COMPLETE ANALYSIS OF CUSTOMER REQUIREMENT
- › DESIGN, ENGINEERING AND PRODUCTION
- › SUPPLY AND COMMISSIONING
- › INSTALLATION OF MACHINES, START-UP AND TRAINING OF PERSONNEL
- › TIME & COST MANAGEMENT OF THE PROJECT
- › PROJECT FINANCING POSSIBILITIES



PRODUCT SUPPORT

- › ONLINE SUPPORT AND TECHNICAL TEAM RESPONSE
- › WARRANTY AND AFTER WARRANTY SERVICE
- › STANDARD AND PREVENTATIVE MAINTENANCE
- › DELIVERY OF SPARE PARTS AND COMPONENTS
- › REPAIRS & OVERHAUL
- › MODERNIZATION & MODIFICATION OF CURRENT EQUIPMENT

AUTOMATION IN PRODUCTION

- › ASSEMBLY, PRODUCTION, QUALITY & PROCESS CONTROL, MATERIAL FLOW AND LOGISTICS
- › APPLICATION OF CREATIVE, MODERN AND VERIFIED PRINCIPLES, METHODS & COMPONENTS
- › INTERCONNECTIVITY, DATA MANAGEMENT AND COLLABORATION
- › INDIVIDUAL APPROACH, CONSULTANCY, ADVISORY, PROJECT MANAGEMENT, FULL-SERVICE

ATEX CERTIFICATION

- › SOLUTIONS FOR EXPLOSIVE ENVIRONMENT



LPP BRANCHES & OFFICES



Contact us

LPP s.r.o.

Pod Hajkem 406/1a, 180 00 Prague, Czech Republic

www.lp-praha.cz / info@lp-praha.cz