

DELIQ - DELinfos **I**ntelligent **Q**uarantine

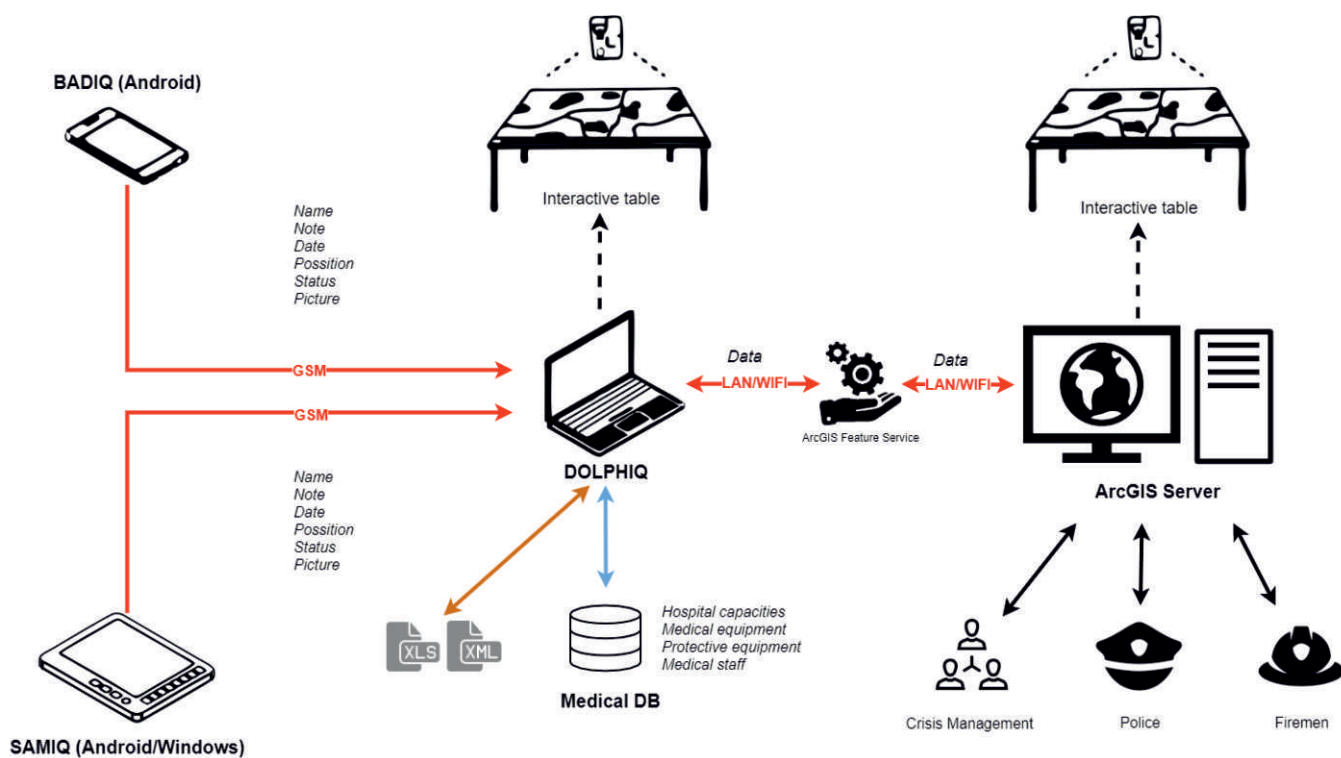


Product is in active use in the Czech Republic due to the actual COVID situation as an important part of Smart Quarantine

DELIQ is an extension standalone module of the ICZ DELINFOS system, which enables the recording, storage and analysis of all necessary data during an epidemiological situation.

The module consists of three levels:

1. Mobile observer (BADIQ/SAMIQ)
2. Staff workplace (DOPLHIQ)
3. Common operational picture of the situation (ArcGIS)



BADIQ

BADIQ is a mobile platform solution which could be represented by a person who records infected people using smartphone directly in the field. This part may consist of an Android/IOS mobile phone. The application at this level allows user to create a person's record consisting of name, status (healthy, infected, suspicious, cured, unknown), creation date, position in the map, note, and photo. Application transmits this data via secured GMS connection to DOLPHIQ, where data are analysed and stored.

Key features

- **Easy to use**
- **Smartphone platform**
- **Certified secured data transmission**
- **Cost effective**

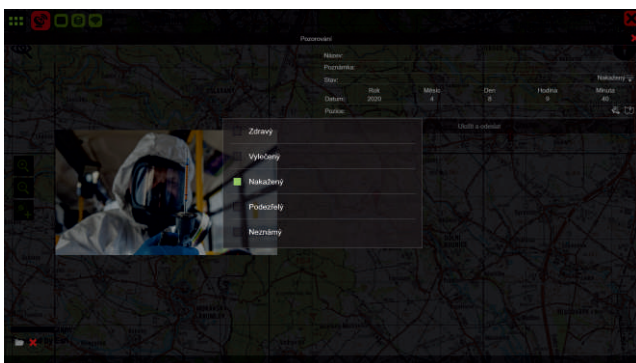


SAMIQ

SAMIQ is a mobile platform solution which could be represented by a person who records infected people using tablet directly in the field or in a car. This part may consist of an Android/Windows tablet. The application at this level allows user to create a person's record consisting of name, status (healthy, infected, suspicious, cured, unknown), creation date, position in the map, note, and photo. Application transmits this data via secured GMS connection to DOLPHIQ, where data are analysed and stored.

Key features

- Easy to use
- Tablet platform
- Certified secured data transmission
- Cost effective

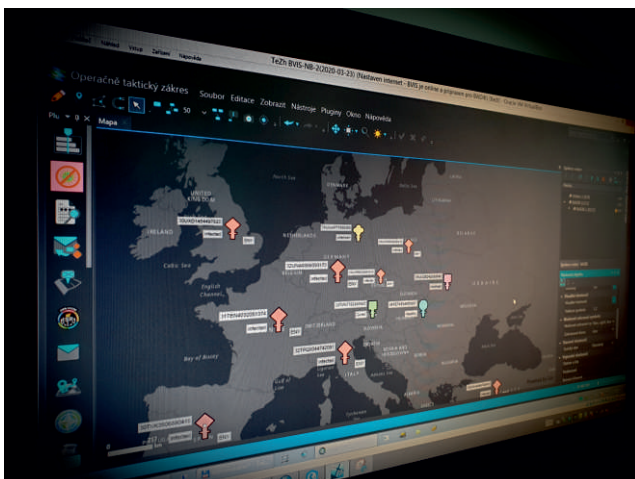


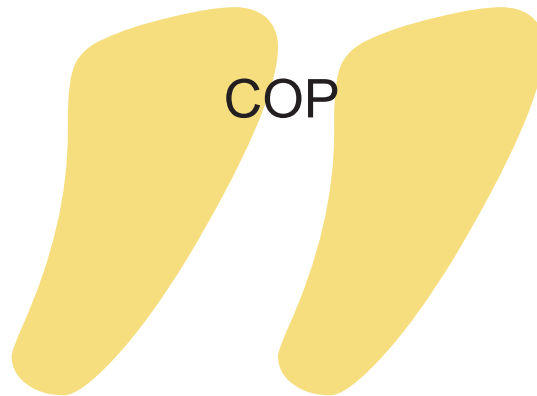
DOLPHIQ

The workstation consists of DOLPHIQ system, which contains an optional module for epidemiologic situation and set of medical application. The module allows to process incoming information from mobile platforms (Mobile Observer), to display this information above the map, evaluate incoming information and manage situation and mobile observers. Set of medical applications allows recording of sampling sites, hospitals, equipment of individual workplaces, supplies of protective equipment, information about patients and about staff of individual hospitals. It allows storing of data according to inteoperable standards which could be shared via crisis management. Optionally, an interactive table could be attached. System allows to display complete epidemiologic situation, it means information from police, firemen etc. using ArcGIS feature service.

Key features

- seamless solution
- database of infected persons
- database of control measuring
- database of hospitals and medical equipment
- evidence of current state of protective equipment
- database of medical staff
- export to XLS
- export to XML
- export to ArcGIS





The common operational picture (COP) is created by ArcGIS software solution from Esri, which provide an international interoperable platform for data analysis using maps. Evaluated data to ArcGIS are transferred from DOLPHIQ via ArcGIS Feature Service which allow to share data in both direction, also allows receiving data from police, sanitary station, firemen, hospitals etc. This data all together create a picture of whole epidemiologic situation and provide all requested information to crisis management.

Key features

- **ArcGIS server solution**
- **International interoperable format of data**
- **Data from whole crisis management at one place**
- **Data analysis and simulation**

